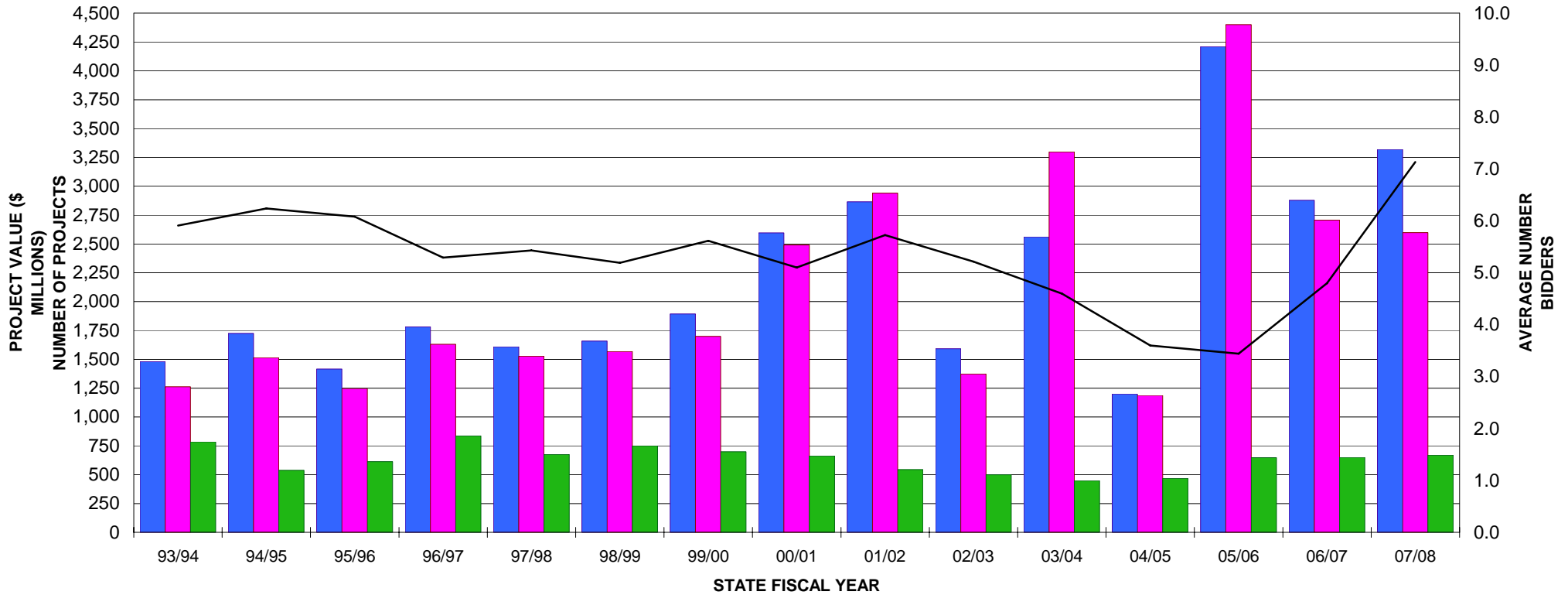
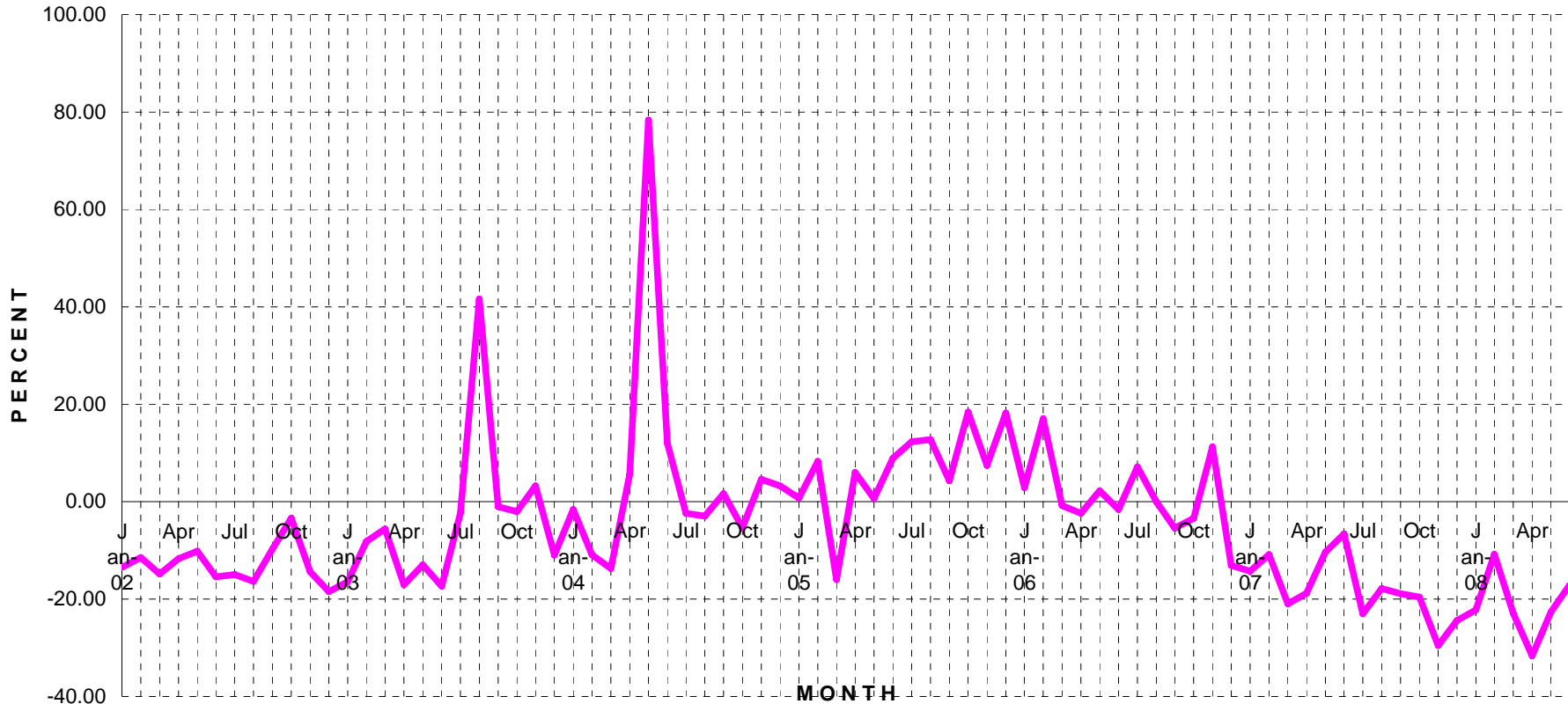


**DIVISION OF ENGINEERING SERVICES - EXECUTIVE SUMMARY
 LOW BID VS ENGINEER'S ESTIMATE
 NUMBER OF PROJECTS & AVERAGE NUMBER OF BIDDERS
 93/94 STATE FY THRU 6/08**



■ Engineer's Estimate
 ■ Low Bid
 ■ Number of Projects
 — Average Number of Bidders

**DIVISION OF ENGINEERING SERVICES - EXECUTIVE SUMMARY
PERCENTAGE DIFFERENCE BETWEEN LOW BID (Shown in red)
AND ENGINEER'S ESTIMATE
JANUARY 2002 THRU JUNE 2008**



DIVISION OF ENGINEERING SERVICES - EXECUTIVE SUMMARY
LOW BID VS ENGINEER'S ESTIMATE
AVERAGE NUMBER OF BIDDERS
JANUARY 2002 THRU JUNE 2008

